



Bracklyn Wind Farm

Annex 5.3:  
Results of Ornithological Surveys

Bracklyn Wind Farm Limited

Galetech Energy Services

Clondargan, Stradone, Co. Cavan Ireland

Telephone +353 49 555 5050

[www.galetechenergy.com](http://www.galetechenergy.com)



## List of Figures

Figure A5.3.1: Distribution of golden plover flocks based on walkover surveys.....	1
Figure A5.3.2: Lough Analla - closest whooper swan site to Bracklyn Wind Farm.....	2
Figure A5.3.3: Wintering waterbird sites in the vicinity of Bracklyn Wind Farm.....	3
Figure A5.3.4: Snipe breeding distribution based on walkover surveys .....	4
Figure A5.3.5: Wintering snipe, jack snipe & woodcock distribution based on walkover surveys .....	5
Figure A5.3.6: Distribution of roding woodcock recorded during dusk surveys.....	6
Figure A5.3.7: Winter distribution of ducks & herons base on walkover surveys .....	8
Figure A5.3.9: Breeding season distribution of ducks & herons base on walkover surveys .....	9
Figure A5.3.10: Breeding season distribution of yellowhammer based on walkover surveys .....	10
Figure A5.3.11: Winter distribution of meadow pipit based on site walkovers.....	11
Figure A5.3.12: Breeding season distribution of meadow pipit based on site walkovers .....	12
Figure A5.3.13: Winter distribution of skylark & house sparrow based on site walkovers .....	13
Figure A5.3.14: Breeding season distribution of skylark & house sparrow based on site walkovers ..	14
Figure A5.3.15: Winter raptor distribution based on walkover surveys .....	15
Figure A5.3.16: Breeding season raptor distribution based on walkover surveys .....	16
Figure A5.3.17: Breeding raptor distribution within 2-km of turbine buffer.....	17

## List of Tables

Table A5.31: Woodcock flights .....	7
-------------------------------------	---





Figure A5.3.1: Distribution of golden plover flocks based on walkover surveys

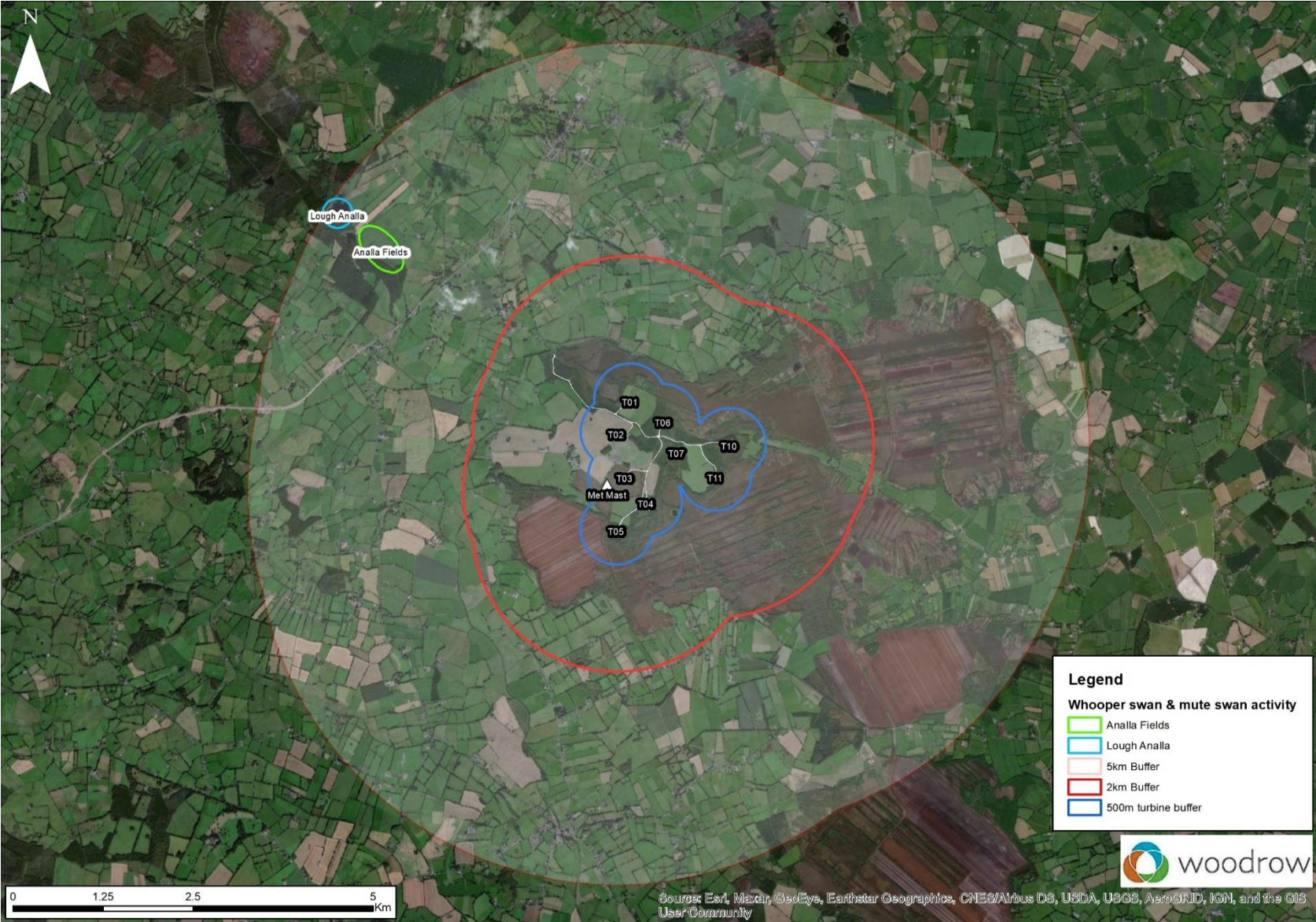


Figure A5.3.2: Lough Analla - closest whooper swan site to Bracklyn Wind Farm

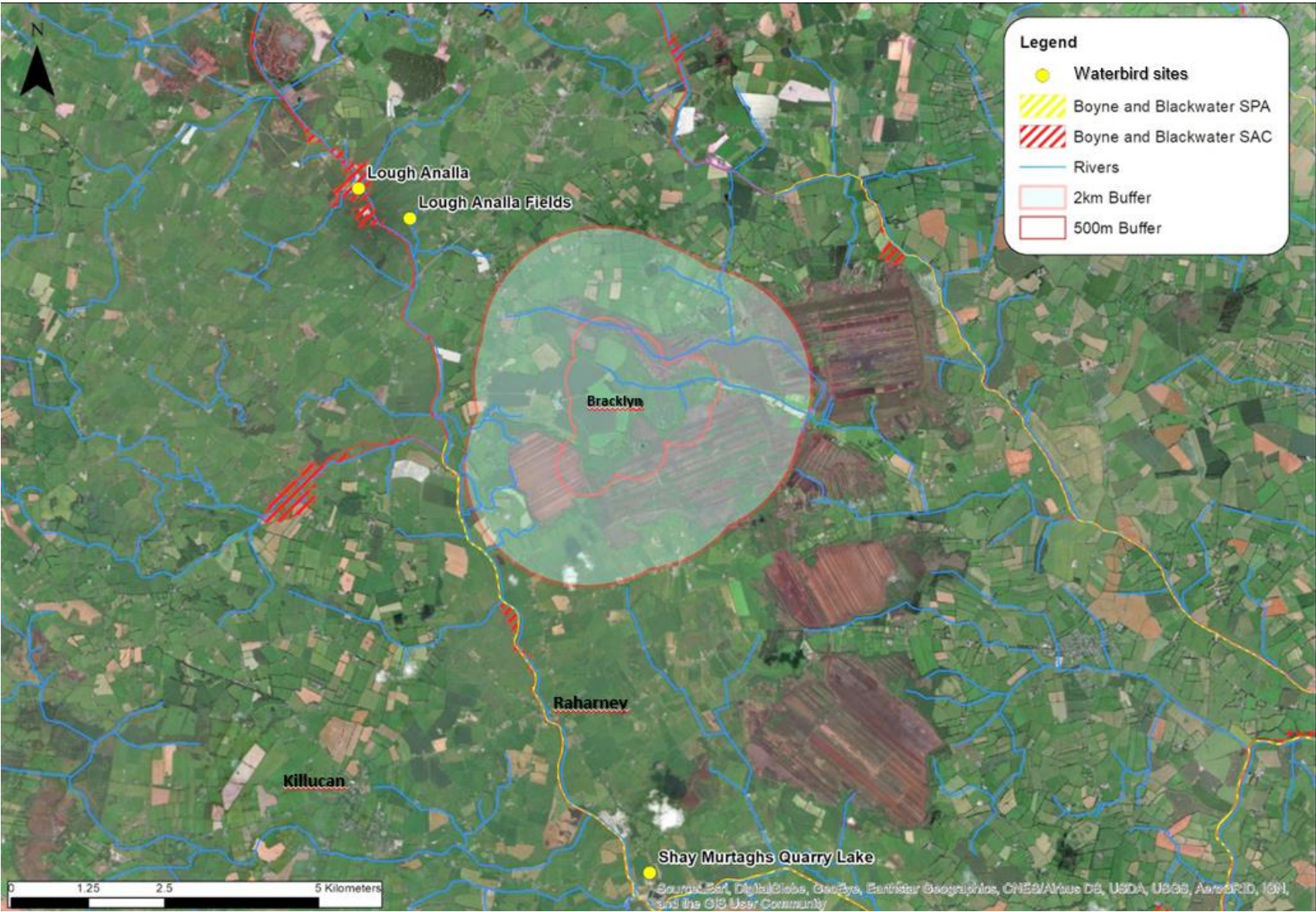


Figure A5.3.3: Wintering waterbird sites in the vicinity of Bracklyn Wind Farm



Figure A5.3.4: Snipe breeding distribution based on walkover surveys



Figure A5.3.5: Wintering snipe, jack snipe & woodcock distribution based on walkover surveys

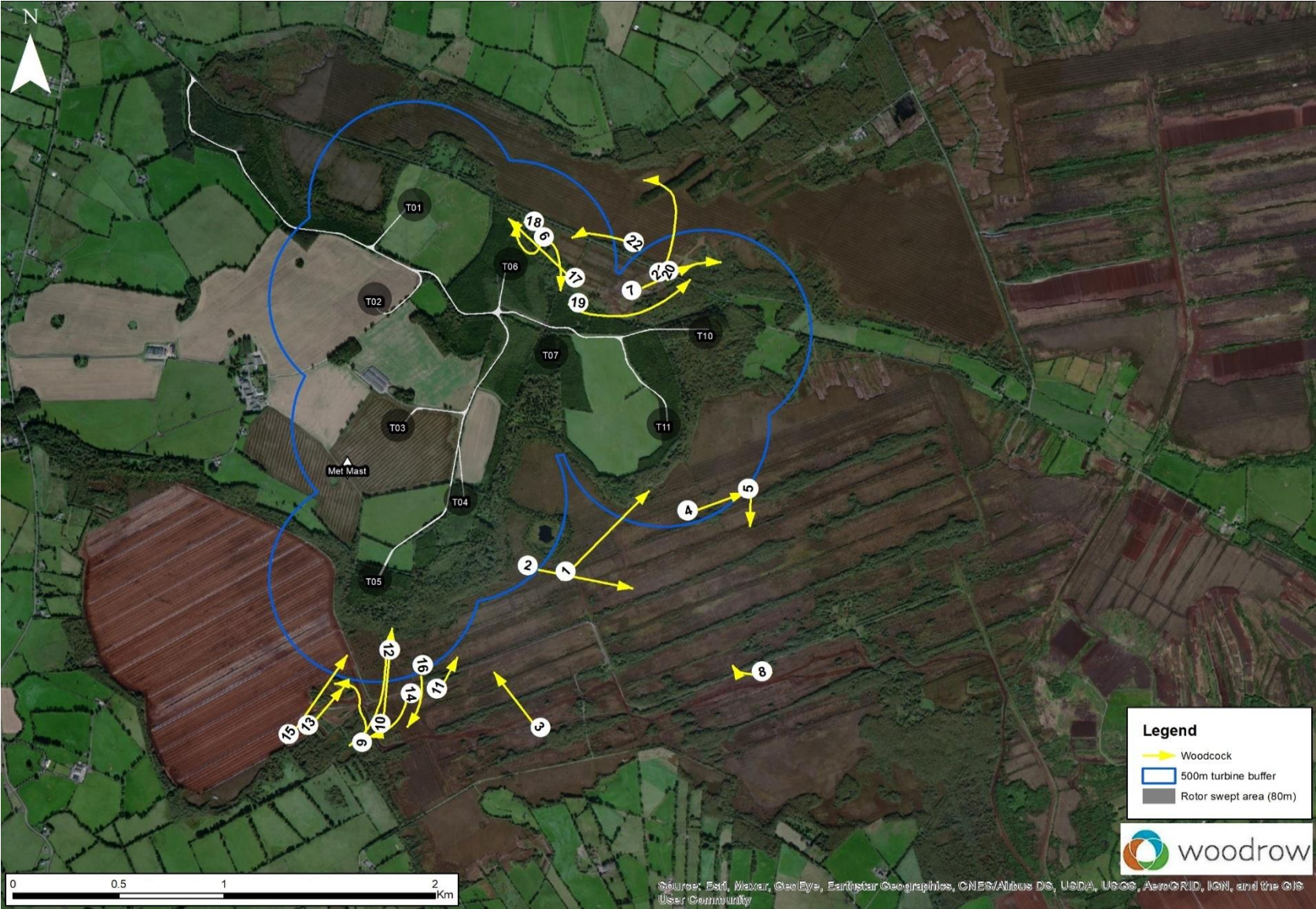


Figure A5.3. 6: Distribution of roding woodcock recorded during dusk surveys



Map reference	Season	Surveyor	Date	BTO Code	Number	Sex	Behaviour
1	2	KW	10/06/2019	WK	1		
2	2	KW	10/06/2019	WK	1		
3	2	KW	10/06/2019	WK	1		
4	2	DM	21/06/2019	WK	1	M	Roding
5	2	DM	21/06/2019	WK	1	M	Roding
6	4	DM	08/05/2020	WK	1	M	Roding
7	4	DM	08/05/2020	WK	1	M	Roding
8	4	DM	27/05/2020	WK	1		Flushed
9	4	DM	27/05/2020	WK	2		Flying
10	4	DM	27/05/2020	WK	1	M	Roding
11	4	DM	27/05/2020	WK	1	M	Roding
12	4	DM	02/06/2020	WK	1	M	Roding
13	4	DM	02/06/2020	WK	1	M	Roding
14	4	DM	02/06/2020	WK	1	M	Roding
15	4	DM	02/06/2020	WK	2	M	Chasing
16	4	DM	02/06/2020	WK	1	M	Roding
17	4	DM	09/06/2020	WK	1	M	Roding
18	4	DM	09/06/2020	WK	1	M	Roding
19	4	DM	09/06/2020	WK	1	M	Roding
20	4	DM	09/06/2020	WK	1	M	Roding
21	4	DM	09/06/2020	WK	1	M	Roding
22	4	DM	09/06/2020	WK	1	M	Roding

**Table A5.3.1: Woodcock flights**



Figure A5.3.7: Winter distribution of ducks & herons base on walkover surveys



Figure A5.3.8: Breeding season distribution of ducks & herons base on walkover surveys



Figure A5.3.9: Breeding season distribution of yellowhammer based on walkover surveys



Figure A5.3.10: Winter distribution of meadow pipit based on site walkovers



Figure A5.3.11: Breeding season distribution of meadow pipit based on site walkovers



Figure A5.3.12: Winter distribution of skylark & house sparrow based on site walkovers



Figure A5.3.13: Breeding season distribution of skylark & house sparrow based on site walkovers





Figure A5.3.14: Winter raptor distribution based on walkover surveys



Figure A5.3.15: Breeding season raptor distribution based on walkover surveys



Figure A5.3.16: Breeding raptor distribution within 2km of turbine buffer

